

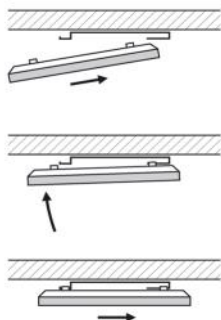
# INSTRUCTION MANUAL

## ECOSUN LOW TEMPERATURE RADIANT HEATING PANELS

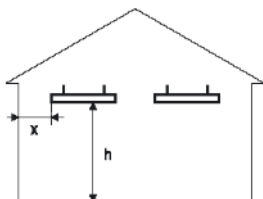
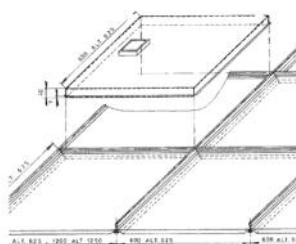
*Protection Class I, Voltage 230 V / 50 Hz*

**For ceiling installation only**

**U**



**VT and U**



### MINIMUM DISTANCES\*

300-600W	$h = 2,5m$	$x = 0,6m$
700W	$h \geq 2,7m$	$x = 1,2m$
850W	$h \geq 3m$	$x \geq 1,2m$
1000W	$h \geq 3,5m$	$x \geq 1,2m$

\* Not applicable to industrial and agricultural applications. The distances must be observed in areas where people stay for a long time.



---

## Warning

---

- Ambient temperature (i.e. temperature of air in the room where the radiator is situated) must not exceed 30 °C!
- Supply lead must be fitted with a disconnecting device and the distance of disconnected contacts must be at least 3 mm at each pole. Installation, electrical connection and the first commissioning is permitted to be performed by a worker with relevant qualifications.
- The supply lead cannot be replaced. If the lead is damaged, the appliance should be discarded.
- Use countersunk screws to install fixing frames.
- Type model number indicates input (300 = 300 W).
- Use gloves for handling not to pollute the front radiating panel surface.
- **Clean with water and detergent, using a small soft brush.**
- The panel must not be placed directly under an electric socket.
- This heater isn't fitted with a room temperature control device. Do not use this heater in small rooms if they are occupied by people who cannot leave the room by themselves unless permanent supervision is provided.
- This appliance can be used by children from the age of 8 and older, and persons with lower physical, sensory or mental abilities or a lack of experience or knowledge providing they are under supervision or have been trained in the use of the appliance in a safe manner and understand the possible danger. Children may not play with the appliance. Cleaning and maintenance by the user must not be carried out by children without supervision. Children under 3 years of age should be prevented from accessing the appliance, unless they are constantly supervised.

**This product is an electric fixed local space heater and, in order to comply with the mandatory ecodesign requirements laid down in Commission Regulation (EU) 2024/1103, it must be equipped with a control unit that provides at least the following control functions:**

**TW (0/f2/0/0/0/0/0)**

**TW (0/0/f3/0/0/0/0)**

**TW (0/0/0/f4/0/0/0)**

**TW (0/0/0/0/0/0/f8)**

**WARNING – Some parts of this product may become very hot and cause burns. Special attention must be paid to this fact in the presence of children and handicapped persons. In order to avoid overheating, do not cover the heater.**

Function of the control unit according to the code TW (0/0/0/0/0/0/18)

This product needs a control to comply with the mandatory ecodesign requirements set out in Regulation (EU) 2024/1103					
Contact details	FENIX s.r.o., Jaroslava Jeřka 1338/18a, 790 01 Jeseník, Czech Republic				
Model identifier(s):	ECOSUN U / VT				
Item	Symbol	Value	Unit	Item	Unit
Control functions necessary to comply with the mandatory ecodesign requirements set out in Regulation (EU) 2024/1103.					
Heat output			Type of heat output/room temperature control (select one)		
Nominal heat output	$P_{nom}$	0,3 - 1,0	kW	Single stage heat output and no room temperature control	No
Minimum heat output (indicative)	$P_{min}$	N/A	kW	Two or more manual stages, no room temperature control	No
Maximum continuous heat output	$P_{max,c}$	0,3 - 1,0	kW	Mechanic thermostat room temperature control	No
				Electronic room temperature control	No
				Electronic room temperature control plus day timer	No
				Electronic room temperature control plus week timer	Yes
Other control options (multiple selections possible)					
Presence detection					No
Open window detection					No
Distance control option					No
Adaptive start control					No
Working time limitation					No
Black bulb sensor					No
Self-learning functionality					No
Control accuracy					Yes

		Code of temperature control (CT)	Control functions							
			f1	f2	f3	f4	f5	f6	f7	f8
Type of temperature control	Single stage, no temperature control	NC								
	Two or more manual stages, no temperature control	TX								
	Mechanic thermostat room temperature control	TM								
	Electronic room temperature control	TE								
	Electronic room temperature control plus day time	TD								
	Electronic room temperature control plus week timer	TW								
Control functions	Presence detection		1							
	Open window detection			2						
	Distance control option				3					
	Adaptive start control					4				
	Working time limitation						5			
	Black bulb sensor							6		
	Self-learning functionality								7	
	Control accuracy with CA < 2 Kelvin and CSD < 2 Kelvin									8

## Instructions for dismantling, disposal or recycling of the product at the end of its life:



Products marked with this symbol must not be disposed of with normal household waste, but must be disposed of separately and recycled.

The collection and recycling of products at the end of their life must be ensured in accordance with local rules and regulations.

# INSTALLATION

## Type: Ecosun 300U, 600U, 700U, 850U, 1000U

**Use:** Flats, offices, schools, hospitals, shops, industry and agricultural premises, etc.

**Fixing:** Preferentially, fix the panel in a horizontal position to a ceiling with a fixing frame or suspend it on chains or cables. The panels can be installed on flammable materials. The distance of front and side walls of the panel from flammable objects must be at least 10 cm. Panel dimensions are typified for inserting the panels in cassette lower ceilings

**Installation:** When mounting is carried out by means of a fixing frame, mark fixing points and fasten the frame with dowels to the ceiling or ceiling construction. Connect the supply lead to the network in accordance with colour marking of conductors. When putting the panel on the fixing frame, first push the panel partially (approx. 10 mm) on the rear shaped ends of frame girders and then incline the panel to the ceiling or ceiling construction so that the front catches may be pushed horizontally on the frame girders. When installing the panel on chains or cables, fix the chains or cables to four catches with  $\varnothing$  6 mm holes by means of snap-hooks or similar fixtures.

## Type: Ecosun 300 VT, 600 VT

**Use:** In cassette lower ceilings 600×600, 600×1200 (Thermax, Rockfon, Armstrong).

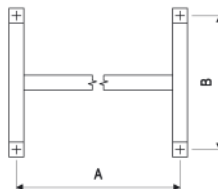
**Installation:** To a lower ceiling grid of respective dimensions. Connect to the box situated on the rear side of the panel.

## Technical specifications

Type	Dimensions [mm]	Weight [kg]	Output [W]	Voltage [V]	Protection class	Coverage	Recommended installation height [m]
Ecosun 300 U	592x592x30	5,0	300	230	I	IP 44	min. 2,5
Ecosun 600 U	1192x592x30	10,1	600				min. 2,5
Ecosun 700 U	1192x592x30	10,5	700				min. 2,7
Ecosun 850 U	1192x800x30	17,5	850				min. 3
Ecosun 1000 U	1192x850x30	18,6	1000				min. 3,5
Ecosun 300 VT	574x574x35	4,6	300	230	I	IP 20	min. 2,5
Ecosun 600 VT	574x1174x35	9,4	600				min. 2,5

### FIXING FRAME -

Platte	A	B(mm)
300U	340	280
600U, 700U	935	280
850U, 1000U		





## Warranty conditions

The supplier provides a warranty of 5 years from date of sale for their product. The warranty does not cover faults caused by transportation, careless manipulation or non-professional installation. The warranty also does not apply in the case of a non-professional intervention into the panel or to everyday wear and tear on the product. You can find the current and full warranty conditions at: [www.fenixgroup.eu](http://www.fenixgroup.eu)

Date of sale:

Serial number:

Type of product:

Signature, Stamp



### **Fenix s.r.o.**

Jaroslava Ježka 1338/18a, 790 01 Jeseník  
tel.: +420 584 495 442, fax: +420 584 495 431  
e-mail: [fenix@fenixgroup.cz](mailto:fenix@fenixgroup.cz), <http://www.fenixgroup.eu>

### **Fenix Trading s.r.o.**

Slezská 2, 790 01 Jeseník  
tel.: +420 584 495 304, fax: +420 584 495 303  
e-mail: [fenix@fenixgroup.cz](mailto:fenix@fenixgroup.cz), <http://www.fenixgroup.eu>